



A Complete Access Control System in Every Lock Core



Videx is built on the cornerstones of innovative engineering, quality manufacturing, and outstanding customer support. Our commitment to these principles is best represented by the price/performance of Videx products, extended product life, and unmatched support provided to each customer.

We are committed to the principle of always treating others the way we would like to be treated.

CyberLock Awards & Milestones

- 2000 ASIS Expo, First Demonstration of the CyberLock System
- 2002 Canadian Security Magazine, Grand Prize Winner – Product of the Year
- 2003 Access Control & Security Systems Magazine, New Product of the Year Finalist
- 2003 Total Facility Management Show, Best of Show in Security
- 2004 Commercial Building Products Magazine, Readers Choice Product of the Year
- 2005 IFSEC Security Show, Access Management Product of the Year
- 2005 Access Control & Security Systems Magazine, New Product of the Year Finalist
- 2005 Introduction of Stainless Steel Cores
- 2006 WFX Expo, Best Security Product of the Year
- 2007 Unique Lock Designs Using CyberLock Technology Reach the 200 Mark
- 2008 Introduction of the Rechargeable Key

Table of Contents

CyberLock in Action	Case Studies	4
CyberLock	Overview	6
CyberLock Cylinders	Doorways, Padlocks, Cabinets, & Vending	8
CyberLock Cylinders	Switches, European, Safes, & Custom	9
CyberLock System	How a System Works	10
Managing Your CyberLocks	Management Tools	12
EntryPoint®	Entry-Level Hardware Only System	12
CyberAudit®-Web Lite	Software for Small Installations	12
CyberAudit-Web Professional	Software for Medium-Sized Installations	13
CyberAudit-Web Enterprise	Server-based Software for Large Installations	14
Software Features	Software Feature Chart	15
CyberLock & CyberKey®	Hardware Specifications	15
About Videx	Training, Technical Support, & Warranty	16

STONINGTON HIGH SCHOOL



"People want to know that their children are safe."

Ken Donovan,
Facility Manager

Problem: Controlling Access at School

The security of children in our schools is a growing concern. Ken Donovan, Facility Manager at Stonington Public Schools, had been researching security products, CyberLock in particular. When the principal asked for a solution to the school's security concerns, Donovan had the answer.

Solution: CyberLock - One Building at a Time

Stonington Schools decided to install CyberLock in the high school first. Other access control systems were not financially feasible; however, the CyberLock system was affordable because no wiring was needed to the doors. The system is designed to fit into most existing lock hardware. Donovan says, "I don't see how you can go wrong. You can have access control for under \$300 per door." Stonington Schools purchased the CyberLocks in small batches to work within their budget, with the goal of installing in all of the buildings at the facility.

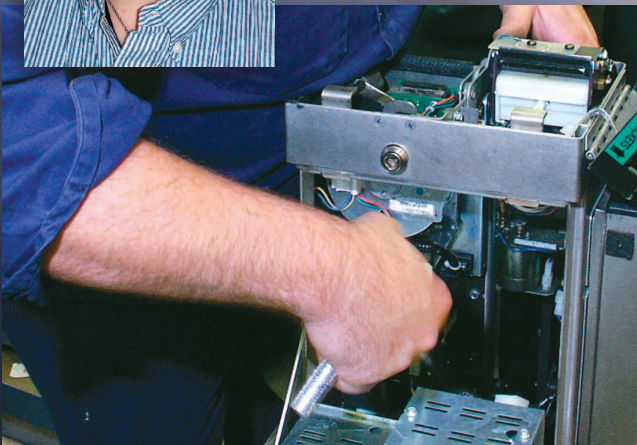
Donovan has taken advantage of the flexibility of his CyberLock system. He has used CyberLock cylinders on exterior doorways, padlocks on gates, and T-handle cylinders on vending machines in the cafeteria. According to Donovan, the school staff has welcomed CyberLock. Not only does it help to insure security, it gives the teachers peace of mind as well. "They know that if something goes wrong, the system will show who was there. People want to know that their children are safe," says Donovan.

CLEVELAND TRANSIT AUTHORITY



"The bottom line is that the collected revenue ratio has increased and employee productivity has improved. The Videx CyberLock system works for us at the Greater Cleveland Regional Transit Authority."

Sgt. Scott Medlong,
Transit Police Officer



Problem: Securing Fare Boxes

The Greater Cleveland Transit Authority had a problem with lost and stolen keys to the fare boxes on their buses. A significant amount of money was not making its way from the boxes to the bank. Re-keying efforts would provide a temporary fix, but only until the next key was misplaced. They needed to determine if lost keys were resulting in lost funds.

Solution: CyberLock Cam Lock

A taskforce was formed to look at fare box security. Their primary concern was the ease with which a conventional key could be duplicated. The taskforce chose the Videx CyberLock system because it addressed all of their concerns. The key and lock remembered what locks had been opened, and when. Also, the system provided the ability to regulate when the lock could be accessed, and by whom. If a key was misplaced, the locks could be told to refuse access to the key.

The immediate benefits were readily apparent. There was a marked improvement in the bill-to-coin collection ratio. Employee accountability improved. Supervisors can now track how much time is being spent on each repair. "The bottom line is that the collected revenue ratio has increased and employee productivity has improved," affirms Transit Police Officer, Sgt. Medlong.

Problem: Quality of Service and Security Issues

New Zealand Post subcontracts their mail collection services to private subcontractors that are responsible for channeling large volumes of mail to central processing centers. Quality of service was an issue. New Zealand Post had no way to determine if and when the mail was being collected from their street receiver boxes. Security was also a concern. If a key was lost, all the locks in that series of street boxes had to be re-keyed at great expense. This put customer mail at serious risk.

Solution: The CyberLock Enterprise System

Ian Bekhuis, Letter Acceptance Network Manager, says, "We put a tender out to industry with a list of our requirements. We selected CyberLock because it was cost-effective and met our requirements in terms of measurability and auditing." New Zealand Post converted 3,500 of their street receiver boxes to CyberLock. "The national networking capability the system provides is a great benefit to us. The system's Enterprise software allows us to perform audits over the network and manage the performance of our subcontractors, even at remote collection sites. We can disable a key immediately should one be lost. The system has greatly enhanced service performance and the security of our customer mail," affirms Bekhuis.

NEW ZEALAND POST



Ian Bekhuis
Letter Network Manager
New Zealand Post

"The national networking capability the system provides is a great benefit to us."

Founded 18 years ago in Norco, a town just outside of New Orleans, Refreshment Solutions has grown into the largest vending company in the State of Louisiana.

Problem: Key Control and Shortages

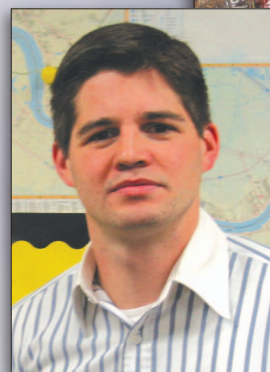
Henry Guste, Chief Operating Officer, says, "We were experiencing serious shortages of products from our machines. Key control was almost impossible. Each driver was carrying a lot of keys because we have so many different types of vending machines and styles of lock hardware."

Solution: CyberLock T-handle Cylinders

Refreshment Solutions researched all the options and in 2005 they decided to go with CyberLock. Today, CyberLocks are installed on a large percentage of their route machines, and for added security, on doors to the Money Room and warehouse. "We are pleased with the system, and recommend CyberLock for companies that are experiencing the problems we were having," says Guste.

In August of 2005, Hurricane Katrina put Refreshment Solutions and CyberLock to an extreme test. Guste says, "Many of our vending machines were submerged in mud and water. During clean-up three weeks after the storm, we were amazed to find that CyberLocks on the machines that had been submerged were still working."

REFRESHMENT SOLUTIONS, INC.



Henry Guste
Chief Operating Officer

"We were amazed to find that CyberLocks on the vending machines that had been submerged in mud and water were still working."

CyberLock *overview*



CyberLock is an innovative lock system that easily converts existing mechanical locks into an access control system. With electronic lock cylinders, programmable CyberKeys, and CyberAudit software, you can create a powerful system to track and control access to every lock in your facility.

How does it work?

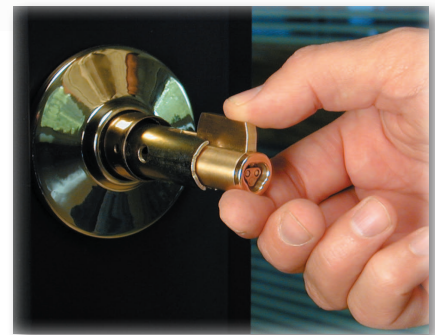
CyberLock electronic cylinders replace standard mechanical cylinders. Each CyberLock cylinder is an electronic version of a standard mechanical lock cylinder. Installing the cylinder into the lock hardware is as simple as removing the existing mechanical cylinder and replacing it with the CyberLock cylinder.

No wiring or battery is required at the lock.

The lock installs without wiring of any kind, and does not contain a battery. The power required to open a lock comes from the battery in the key.

CyberLocks cannot be picked.

CyberLocks have no keyway, and cannot be picked like a mechanical lock. CyberLocks resist forced rotation, and are designed to remain in the locked position if tampered with.



CyberKeys cannot be duplicated.

It's not possible to create a duplicate CyberKey. Passwords in the software and hardware are unique to each installation, and protect against creation of unauthorized keys. And, although two keys can be programmed alike, each one makes its own unique record in the software.

Both a key with a replaceable battery and a key with a rechargeable battery are available.



Keys can be assigned a begin date and an expiration date.

This means keys can be issued before they begin working, and can be set to expire at a particular time in the future. Setting short-term expiration dates on keys is an excellent way to minimize risk due to lost or stolen keys.

Each key contains a list of locks it can open, with days and times.

The CyberKeys are programmed with access privileges for each user. A standard key holds a list of up to 3300 locks the user can open, with the schedule of days and times they are allowed in.



Lock 1 Schedule

Access Times		Sun	Mon	Tue	Wed	Thur	Fri	Sat	Hol
Start	Stop		<input checked="" type="checkbox"/>	<input checked="" type="checkbox"/>	<input checked="" type="checkbox"/>	<input checked="" type="checkbox"/>	<input checked="" type="checkbox"/>	<input checked="" type="checkbox"/>	<input type="checkbox"/>
▶ 8:00:00 AM	12:00:00 PM	<input type="checkbox"/>	<input checked="" type="checkbox"/>	<input checked="" type="checkbox"/>	<input checked="" type="checkbox"/>	<input checked="" type="checkbox"/>	<input checked="" type="checkbox"/>	<input checked="" type="checkbox"/>	<input type="checkbox"/>
1:00:00 PM	5:00:00 PM	<input type="checkbox"/>	<input checked="" type="checkbox"/>	<input checked="" type="checkbox"/>	<input checked="" type="checkbox"/>	<input checked="" type="checkbox"/>	<input checked="" type="checkbox"/>	<input checked="" type="checkbox"/>	<input type="checkbox"/>

Lock 2 Schedule

Access Times		Sun	Mon	Tue	Wed	Thur	Fri	Sat	Hol
Start	Stop		<input checked="" type="checkbox"/>	<input type="checkbox"/>	<input checked="" type="checkbox"/>	<input type="checkbox"/>	<input checked="" type="checkbox"/>	<input type="checkbox"/>	<input type="checkbox"/>
▶ 8:00:00 AM	11:00:00 AM	<input type="checkbox"/>	<input checked="" type="checkbox"/>	<input type="checkbox"/>	<input checked="" type="checkbox"/>	<input type="checkbox"/>	<input checked="" type="checkbox"/>	<input type="checkbox"/>	<input type="checkbox"/>
2:00:00 PM	4:00:00 PM	<input type="checkbox"/>	<input type="checkbox"/>	<input checked="" type="checkbox"/>	<input type="checkbox"/>	<input checked="" type="checkbox"/>	<input type="checkbox"/>	<input type="checkbox"/>	<input type="checkbox"/>

Joe Wilson	West Entrance	03/20/2008 07:28:03 AM	Out of Schedule
Abby Chaney	Records Room	03/20/2008 07:59:15 AM	Key Authorized
Pete Sussman	Computer Room	03/20/2008 08:00:03 AM	Key Authorized
John Michaels	West Entrance	03/20/2008 08:12:16 AM	Key Authorized
Evelyn Laffer	Computer Room	03/20/2008 08:18:52 AM	Key Authorized
Juanita Banks	Computer Room	03/20/2008 08:27:12 AM	Denied
Andy Durnmore	Chem Lab	03/20/2008 09:21:45 AM	Key 1 of 2
Juanita Banks	Chem Lab	03/20/2008 09:21:56 AM	Key 2 of 2
Abby Chaney	Records Room	03/20/2008 09:58:33 AM	Key Authorized
Pam Freeman	Computer Room	03/20/2008 10:12:07 AM	Lost Key
Elizabeth Ward	East Entrance	03/20/2008 10:21:04 AM	Key Authorized
Abby Chaney			

A record of all events is stored in both the locks and the keys.

Each time a key is used at a lock, a record of the lock ID, date, and time is stored in the key, and a record of the key ID, date, and time is stored in the lock. The key stores up to 3900 of the most recent access events, and the lock stores the most recent 1100 access events. Locks and keys also record when an unauthorized person attempted to open the lock with a CyberKey.



One key opens doorways, padlocks, cabinets, safes, vending machines, and more!

The complete line of cylinders allows controlling access to much more than just doorways. Designed for both indoor and outdoor use, the durable CyberLock tracks and controls access to padlocked gates, safes, cash drawers, server cabinets, fare boxes, freight trucks, and vending machines . . .

One Key Opens Many Locks



Cylinders for Doorways

Enter the world of CyberLock through the front door! Videx cylinders for doorways are the first place most people begin. The cylinder cannot be picked, provides an audit trail of activity, and requires no wiring.

You can retrofit knob or lever locks that require Schlage® 6-pin and Yale® 6- or 7-pin format cylinders. Other door hardware options include rim and mortise cylinders in a variety of sizes and finishes.



IC Cylinders

Whether in a door application or providing access to a cabinet, CyberLock interchangeable cores are easy to install using a programmable control key. Both a small-format IC and a Schlage-type large-format IC are available.



CyberLock Padlocks

One of the most useful and unique applications for CyberLock is in a padlock! Now you have an intelligent padlock to control access to the back of your delivery trucks, outside gates, and control boxes. CyberLocks for padlocks are manufactured with additional protection against moisture at the back of the cylinder, for strong performance in padlocks installed outdoors in harsh, wet environments.

Cylinders for Cabinets

Cabinets, boxes, and containers often use cam locks. The Videx line includes two standard cam locks and a variety of custom cam lock designs. This range brings access control to fare boxes on buses, jewelry display cases, medical cabinets, and server cabinets. No wiring required and full access control provided!



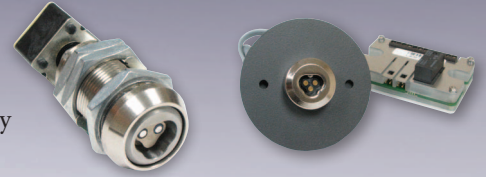
Cylinders for Vending Machines

CyberLock offers complete access control for your vending machines, providing a full audit trail of all activity. Everyone is accountable, every dime is accounted for! Whether you install CyberLock vending cylinders on one troublesome route, or on all your machines, you're in control.



CyberLock Switch Locks

CyberKeys can be used for more than just opening a lock. CyberLock switch locks can activate and deactivate an alarm, open a rollup gate, or operate an elevator. Two CyberLock switch locks are a cam-style, and provide either on/off or momentary operation. A third choice separates the electronics from the key receptacle for more secure installations.



Cylinders for the European Market

The CyberLock line includes a number of cylinders for export to Europe.

The heart of the European line is comprised of half, knob, and double profile cylinders in a variety of lengths. A number of round and oval designs are also available.



High-Security Drill-Resistant Cylinders

A number of CyberLock cylinders incorporate innovative design features that provide a high resistance to drill-outs. These drill-resistant cylinders are ideal for applications such as cash handling, vending machines, parking meters, and high-security doors.



CyberPoint: A Checkpoint Solution

CyberPoint is an electronic tag for use as a data checkpoint. With each touch of a CyberKey, a record is stored in both the key and the CyberPoint, making it a unique and certain solution for guard tours, preventive maintenance checks, and inspections.

Cylinders for Specialty & Custom Applications

Requests for CyberLock access control solutions span the globe. Whether an Australian oval, Japanese Miwa, or a cylinder for a South African payphone, we welcome the challenge of manufacturing the locks you require. The diverse CyberLock product line includes over 200 designs, and provides solutions to unique applications worldwide.



CyberKeys: Take Your Choice

We're all about choices, so two CyberKeys are available, both with the same programmability. One key uses a 3-volt lithium battery that is easily replaced in the field. The other uses an extended-life rechargeable battery that gives one- to two-weeks of performance between charges. Take your choice!



How a System Works Together



What's happening in the lock?

Each CyberLock contains:

- a unique ID number that cannot be changed or duplicated
- a list of the most recent 1100 access events: key ID, date and time, and type of event
- encrypted access codes that identify it as belonging to a particular system



What's happening in the key?

Each CyberKey contains:

- a unique ID number that cannot be changed or duplicated
- a list of up to 3900 access events: lock ID, date and time, and type of event
- the access schedules for that specific key
- encrypted access codes that identify it as belonging to a particular system

How do the locks and keys communicate with one another?

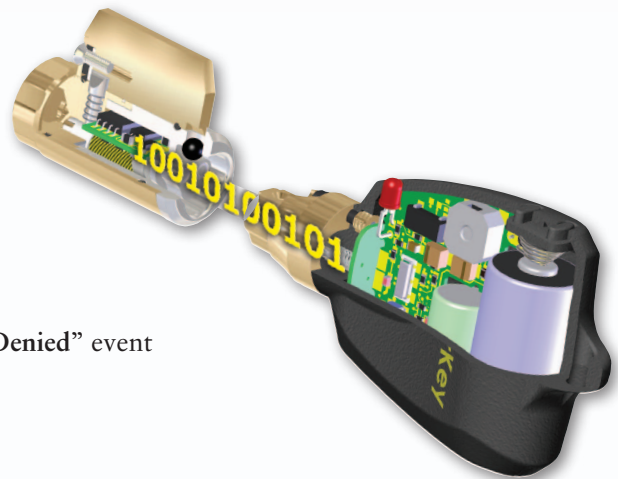
When a key contacts a lock, a sequence of events occurs:

- the battery in the key energizes the circuitry in the lock
- the lock and key exchange IDs
- the key checks that the lock ID is on its list of locks it may open
- the key checks that it is at the lock at an authorized day and time
- the lock and key compare access codes to verify they are from the same system

- the key gains permission to open the lock, and an “Authorized to open” event is time-stamped and stored in both lock and key

or

- the key is denied permission to open the lock, and a “Denied” event is time-stamped and stored in both lock and key



How do keys communicate with the software?

A variety of devices are available for communication between the keys and the software. These devices are called communicators. The type of communicator you use depends on the software management system you implement, and the requirements of your CyberLock installation. Here's an overview of your choices:

IR Encoder *works with* Lite Professional Enterprise

The IR Encoder is an infrared device that connects to a USB port. It links CyberKeys to the software by making an infrared connection to the IR port on the CyberKeys.



USB Station *works with* Lite Professional Enterprise

The USB Station connects by cable to the computer USB port for communication between the keys and the software. The USB Station also recharges the battery of the rechargeable CyberKey.



WebStation *works with* Lite Professional Enterprise

WebStation adds network capability to the USB Station, and can be used either connected directly to the USB port of the computer or installed anywhere in your facility where you have a network connection. Like the USB Station, it recharges the battery of the rechargeable CyberKey.



CyberKey Authorizer *works with* Lite Professional Enterprise

CyberKey Authorizer allows programming and downloading keys from remote locations. When installed at the remote site, Authorizer connects back to the management software over the web, on a local network, or by modem.



PDA Cell Phone *works with* Lite Professional Enterprise

With the Enterprise system, user keys can be programmed on-demand in the field by making an infrared connection from the key to a PDA cell phone. The cell phone receives the programming information from the Enterprise server, and sends the authorizations to the key via infrared communications.



Managing Your CyberLocks

CyberLock customers are a diverse group, and not all have the same management goals and requirements. So, you'll find a range of management tools to accommodate every type of installation, from small businesses to widespread corporations and campuses:

- EntryPoint, an entry-level hardware-only system
- CyberAudit-Web Lite, straightforward software for small installations, intended for up to 50 locks and 50 keys
- CyberAudit-Web Professional, a system for mid-sized installations, capable of handling 500 locks and 500 keys
- CyberAudit-Web Enterprise, feature-filled software installed on an application server, offering high-end capability for the large, enterprise customer

See the software features chart on page 15 for a software comparison overview.

EntryPoint

EntryPoint is a basic system comprised of hardware only; no software is required. EntryPoint is ideal for simple installations that require high security: a lock that cannot be picked and a key that cannot be duplicated.

An EntryPoint system includes standard CyberLock cylinders and CyberKeys, plus a Grand Master key. The Grand Master has a pre-programmed encrypted code and is used to program locks and keys with this encrypted code. CyberKeys are given 24/7 access to the locks.



CyberAudit-Web Lite

CyberAudit-Web Lite is user-friendly software that allows scheduling access and viewing an audit trail from CyberLocks and CyberKeys. A simple matrix of locks, keys, and schedules is easy to use: the schedule you assign at the intersection of a lock and key determines how the key operates when it contacts that lock. Lite allows expiring keys on a regular basis.

CyberAudit-Web Lite installs on a local PC or Mac, and is intended for systems of up to 50 locks and 50 keys. In addition to the Lite software, a system consists of CyberLocks, CyberKeys, a Grand Master, and either an IR Encoder or USB Station for communication between the keys and the computer.



Schedule: D-Day Shift	S	M	T	W	T	F	S	S	H
6:00 AM to 5:00 PM	X	X	X	X	X	X	X	X	X

	Conference 1	Conference 2	Conference 3	Electrical	Front Door	Library	Loading Dock	Lobby	Maintenance	Photo Lab	Server Room	Shipping / Receiv...	Shop	Swt Room	Test Lock
Andrew Zimms	I			D	D	D	D	D	D	D	D	D	D	D	D
Brenda Stanley	I				D	D	D	D	D	D	D	D	D	D	D
Lewis Leatin	I				D	D	D	D	D	D	D	D	D	D	D
Niles Tesla	I	D	D	D	D	D	D	D	D	D	D	D	D	D	D
Gerald Bean	I				W				W	W					
Dan Edwards	I	D	D	D	D	D	D	D	D	D	D	D	D	D	D
Jerry Utler	I					W			W						
Thomas Tine	I					D			D						
Avery Green	I					W			W						
CEO - Ben Stein	I	D	D	D	D	D	D	D	D	D	D	D	D	D	D

CyberAudit-Web Professional

CyberAudit-Web Professional installs on your PC, Mac, or server for management of a CyberLock system. It is ideal for small- to medium-sized companies that need a high level of security and key control. Highlights of the Professional software are:

- Access scheduling: determine what keys should open what locks, and when.
- Audit trail: see the access information gathered by the locks and keys.
- Key expirations: decide how often you want each user's key to expire, then let the software manage expirations automatically for you.
- Email notifications: receive an email notification on specific events, such as denied entries or events over the weekend.
- Reporting: set up report templates to run regular reports on the data from locks and keys.
- Designation of lost keys: Use the lost key feature to block keys outside of your control from the locks.
- Software log: view the history of changes made in the software at any time.



A complete system includes locks, keys, one or more communicators, a Grand Master, and the Professional software.

The top Administrator opens a browser to manage the system from a central computer.



Local users program and download keys using an IR Encoder or USB Station connected directly to the central computer.



Keyholders program and download their keys from their computers or by using Authorizers or Web Stations.



Other Administrators access the system by opening a browser on their computers.

CyberAudit-Web Enterprise

CyberAudit-Web Enterprise is web-based software packaged on an application server. This management system is intended for large or more complexly-structured CyberLock installations. Enterprise builds on the features of Professional, and offers:

- Flexible access to the software: access Enterprise from any computer on a local network or the World Wide Web just by opening a browser and logging on.
- Hierarchy of administrators: give each person in the management chain control over their own people, locks, and keys independently, while allowing top administrators to view the entire system.
- On-demand access: use PDA cell phones to grant emergency one-time access or program and download keys in the field.
- Enhanced management tools: create groups of locks and permissions, program any available key with permissions for a specific user, and share locks with other Enterprise users.

A complete system includes locks, keys, one or more communicator devices, a Grand Master, and the Enterprise server.

CyberAudit-Web Enterprise is packaged on a HP or IBM server running enterprise Linux. The application is written in Java and the web pages are served by Tomcat with Java Server Pages. The information is stored in a MySQL database.



CyberAudit Software Features Chart

This chart provides a summary of products and features for each of the four CyberAudit management options. You may have questions about what is best for your business! Please call Videx Sales for more information.

	EntryPoint	Lite	Professional	Enterprise
CyberLocks®	•	•	•	•
CyberKeys®	•	•	•	•
CyberPoints®			•	•
Grand Master Keys	•	•	•	•
IR Encoder		•	•	•
Web/LAN/Modem Authorizer®			•	•
USB Station		•	•	•
WebStation			•	•
PDA Cell Phone				•
Audit Trail		•	•	•
Schedule Keys		•	•	•
Master Keys			•	•
Expire Keys		•	•	•
Lost Keys			•	•
Multiple Key Mode and Delay			•	•
Email Notification of Events			•	•
Key Expiration Email			•	•
Low Battery Email Notification			•	•
Hierarchy of Administrators				•
Grouping of Locks and People			•	•
Grouping of Access Permissions			•	•
User Keys Download Locks		•	•	•
User Keys Program Locks				•
Missions				•
Multiple Time Zones				•
Shared Locks				•

Hardware Specifications

Locks

- Locks have no keyway to pick
- Locks store the last 1100 events with date and time
- No limit to the number of keys that a lock can support
- Locks are torque and electrical charge resistant
- Power is supplied by the key's battery
- All cylinders appropriate for outdoor applications
- Operating temperature: -40° to 160° F; -40° to 70° C

Keys

- A key cannot be duplicated
- A key stores up to 3900 events with date and time
- A standard user key can access up to 3300 locks
- A key contains the scheduled access days & times
- A key holds the battery power source
- Operating temperature: 32° to 122° F; 0° to 50° C



Videx, founded in 1979, is a leading manufacturer of data collection and access control products. Videx first created display enhancement products for Apple computers. In 1985, the first Videx bar code scanner, the TimeWand I, was introduced. Several designs of portable, durable bar code and iButton readers followed this initial launch, and continue to provide solutions for a variety of data collection applications. CyberLock was introduced in the year 2000, with one cylinder design. Today, CyberLock technology has been incorporated into over 200 lock designs, with customers around the world.

With a long history in electronic design and manufacturing, and a clear focus on the future, Videx is sure to be providing effective solutions to customers for years to come.

Training Program and Technical Support

Training on the CyberLock hardware and software is an important component of a successful installation. We offer a PowerPoint training CD for Lite, an online class for Professional, and training at Videx for Enterprise. Contact us for information on setting up your training.

Our Technical Support team is available to answer any questions on your hardware and software. Your phone call, email, or fax is quickly routed to a highly-trained individual who can walk you through using our products.

Product Warranty

During the first year from the date of original end user purchase, repair or replacement of Videx hardware is done at no cost. After the first year, Videx has a graduated warranty, where cost of service or replacement on the unit is determined by how long the product has been in use. Any product in for repair after the first year warranty has ended is covered by a new warranty when it ships back to you.

You can find details of our warranty and service procedures on our web site at www.videx.com.

How to Get Started

The Videx Sales and Marketing team is available to answer any questions you have on CyberLock, and can put you in touch with one of our certified providers for local support.



1105 N.E. Circle Blvd., Corvallis, OR 97330
541-758-0521 • Fax 541-752-5285
www.videx.com • sales@videx.com